

SB 86/2014

13 November 2014

Local authority municipal waste management report for Wales, 2013-14

This annual Statistical Bulletin presents final results for 2013-14 from the WasteDataFlow system monitored by Natural Resources Wales. The bulletin presents information on local authority municipal waste collected and sent for disposal from household and non-household sources during the year, as well as information for previous years.

From 1 April 2012 there were changes in definitions relating to local authority municipal waste generated and the percentage prepared for reuse, recycled or composted in Wales. As a result, from 2012-13 figures published within this annual statistical bulletin are directly comparable with those in the quarterly statistical release and the National Strategic Indicator. A detailed description of these definitional changes and their impacts can be found in the Statistical article [Local Authority Municipal Waste Management - Change in Definition](#) (see also notes 13-15 in Key Quality Information).

Data on waste management is collected in order to monitor progress towards national and local targets; in particular against the requirements of the EU Landfill Directive. The aim of this Directive is to reduce the amount of methane emitted from landfill sites by setting targets for Member States to reduce the amount of biodegradable municipal waste sent to landfill. In its current waste strategy "Towards Zero Waste", the Welsh Government set statutory targets of recycling 52 per cent of waste by 2012-13 and 70 per cent of waste by 2024-25.

Key results:

- The percentage of local authority municipal waste (excluding abandoned vehicles) that was reused, recycled or composted in Wales has continued to increase since 2000-01, with 54.3 per cent of waste reused/recycled/composted during 2013-14, under the new definition.
- During 2013-14, 18 of the 22 local authorities in Wales met or exceeded the statutory reuse/recycling/composting target of 52 per cent.
- The total amount of local authority municipal waste (excluding abandoned vehicles) generated in Wales has generally fallen since its peak in 2004-05. However, the 1.56 million tonnes generated in 2013-14 was slightly higher than 2012-13, due to an increase in non-household waste generated.
- The amount of residual waste generated continued to fall, with 0.6 million tonnes (38 per cent) disposed of via landfill or other methods of disposal/treatment during 2013-14.

Statistician: Rhiannon Caunt

Tel: 029 2082 6768

Email: stats.environment@wales.gsi.gov.uk

Next update: November 2015 (provisional)

Twitter: www.twitter.com/statisticswales | www.twitter.com/ystadegaucymru

Cyhoeddwyd gan Y Gwasanaethau Gwybodaeth a Dadansoddi

Llywodraeth Cymru, Parc Cathays, Caerdydd, CF10 3NQ

Ffôn – Swyddfa'r Wasg **029 2089 8099**, Ymholiadau Cyhoeddus **029 2082 3332**

www.cymru.gov.uk/ystadegau

Issued by Knowledge and Analytical Services

Welsh Government, Cathays Park, Cardiff, CF10 3NQ

Telephone – Press Office **029 2089 8099**, Public Enquiries **029 2082 5050**

www.wales.gov.uk/statistics



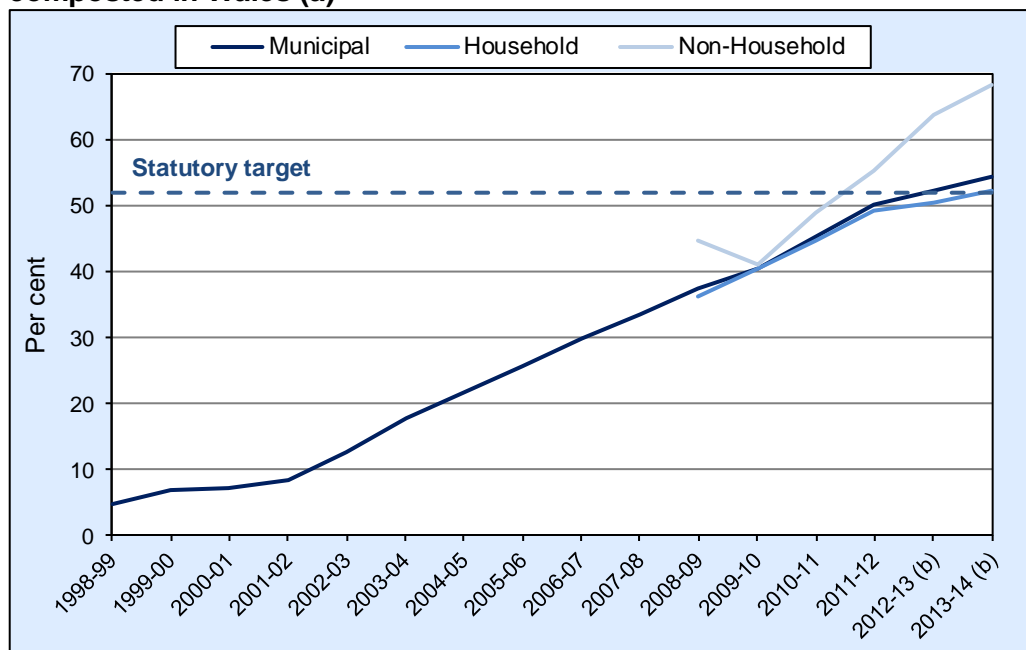
Llywodraeth Cymru
Welsh Government

1. Local authority municipal (household and non-household) waste prepared for reuse, recycled or composted

This section considers the combined preparation for reuse, recycling and composting rates for Wales (known as reuse/recycling/composting rates), where recycling differs from re-use because of the need to significantly reprocess the material, which often results in it being subsequently manufactured into a different product.

Chart 1 and Table 1 show the combined percentage of waste which was prepared for reuse, recycled or composted in Wales, by financial year. Data for years prior to 2012-13 are based on waste collected for disposal/treatment (i.e. old definition), whilst data for 2012-13 onwards are shown under the new definition (i.e. waste sent for disposal/treatment).

Chart 1: Percentage of local authority municipal waste prepared for reuse, recycled or composted in Wales (a)



Source: WasteDataFlow

(a) Includes household and non-household waste; excludes abandoned vehicles.

(b) New definition; data for 2012-13 onwards reflect waste sent for reuse/recycling/composting or other methods of disposal.

The percentage of local authority municipal waste (including rubble, incinerator residues, matter from beach cleansing and plasterboard, but excluding abandoned vehicles) prepared for reuse, recycled or composted in Wales has seen a continued increase to 54.3 per cent in 2013-14. This is above the statutory target for local authorities of 52 per cent.

The sharp increase in reuse/recycling/composting rates may have been influenced by the publication of "Wise about waste" and its targets in 2002. Following on from this, local authorities have introduced new systems to collect recyclate from households, using funding made available by the Welsh Government. Additional reasons may also include increased public participation in recycling and development of markets for recyclate and compost in Wales.

Local authority municipal waste includes both household and non-household (e.g. from businesses, municipal gardens, schools etc.) waste, but excludes abandoned vehicles. As can be seen from Chart 1 above the household reuse/recycling/composting rate for Wales follows the same trend as the overall reuse/recycling/composting rate, though remains consistently below it. It is unsurprising that the trends are similar as the majority of local authority municipal waste is household waste.

The general increase over time in reuse/recycling/composting rates for household waste may be affected by changes to household collections introduced by local authorities, particularly enhancing collections for dry and compostable materials.

Table 1: Percentage of local authority municipal (household and non-household) waste prepared for reuse, recycled or composted in Wales (a)

	<i>Per cent</i>					
	2008-09	2009-10	2010-11	2011-12	2012-13 (d)	2013-14 (d)
Household rate (b)	36.3	40.4	44.7	49.2	50.5 (r)	52.2
Non Household rate	44.6	40.9	49.0	55.1	63.7	68.3
Local authority municipal rate exc. abandoned vehicles (c)	37.5	40.5	45.3	50.0	52.3	54.3

Source: WasteDataFlow

(a) Amount prepared for reuse/recycled/composted as a percentage of total waste.

(b) Includes regular, specific and special collections and civic amenity sites. Where local authorities collect non-household waste (i.e. from a business, school etc.) in the same collection round as household waste it may not be possible for them to provide an accurate split between the household and non-household waste collected.

(c) Includes household and non-household waste; excludes abandoned vehicles.

(d) These figures are based on the new definition (municipal waste 'sent' for reuse/recycled/composted).

(r) Figure has been revised since published in the previous bulletin for 2012-13, due to a change in methodology.

Recycling rates for non-household waste are higher, and increasing more markedly, than for household and local authority municipal waste. It is worth noting that non-household waste includes rubble and plasterboard collected by local authorities. These materials are relatively heavy and are mostly reported as being reused/recycled which may influence the non-household recycling rate. In addition local authorities introduce new schemes at various times, affecting the provision of residual waste and recycling services for businesses, which may also influence the non-household recycling trend.

It should be noted that where local authorities collect non-household waste in the same collection round as household waste, it may not be possible for them to provide an accurate split between household and non-household sources.

Local authority municipal waste reuse/recycling/composting rates by local authority area

The reuse/recycling/composting rates reported below include rubble, incinerator residues, matter from beach cleansing and plasterboard, but exclude abandoned vehicles. Data for years prior to 2012-13 are based on waste collected for disposal/treatment (i.e. old definition), whilst data for 2012-13 onwards are shown under the new definition (i.e. waste sent for disposal/treatment).

Table 2: Municipal waste reuse/recycling/composting rates by local authority (a)

	<i>Per cent</i>					
	2008-09	2009-10	2010-11	2011-12	2012-13 (b)	2013-14 (b)
Isle of Anglesey	45.9	51.2	55.8	57.1	55.2	54.4
Gwynedd	36.7	43.0	45.9	48.1	51.2	54.0
Conwy	38.7	37.3	40.2	48.1	56.4	56.3
Denbighshire	33.7	52.5	56.8	55.7	58.0	63.2
Flintshire	42.4	43.2	47.1	48.3	54.9	55.1
Wrexham	37.4	41.0	48.8	53.3	52.8	54.7
Powys	41.3	39.7	37.7	42.6	50.9	52.5
Ceredigion	48.7	48.5	51.4	58.4	53.6	58.4
Pembrokeshire	38.9	44.3	48.9	50.0	53.1	60.3
Carmarthenshire	33.8	40.1	43.4	49.3	53.8	55.7
Swansea	32.1	34.9	40.5	45.2	47.9	52.8
Neath Port Talbot	34.9	37.1	44.0	43.9	48.3	54.0
Bridgend	38.4	33.5	48.0	56.3	57.1	56.5
Vale of Glamorgan	40.4	41.2	43.8	52.4	54.5	54.8
Cardiff	34.5	38.3	41.6	51.2	52.2	49.7
Rhondda Cynon Taf	37.2	36.9	44.7	47.3	46.2	49.3
Merthyr Tydfil	31.6	35.7	36.4	43.2	49.1	48.2
Caerphilly	36.5	47.3	53.7	59.1	57.1	57.6
Blaenau Gwent	25.0	29.2	35.5	42.3	51.2	54.8
Torfaen	49.0	47.5	46.7	47.5	47.1	52.3
Monmouthshire	38.5	40.9	48.6	55.3	55.5	62.9
Newport	38.2	40.7	45.7	48.2	49.2	51.7
Wales	37.5	40.5	45.3	50.0	52.3	54.3

Source: WasteDataFlow

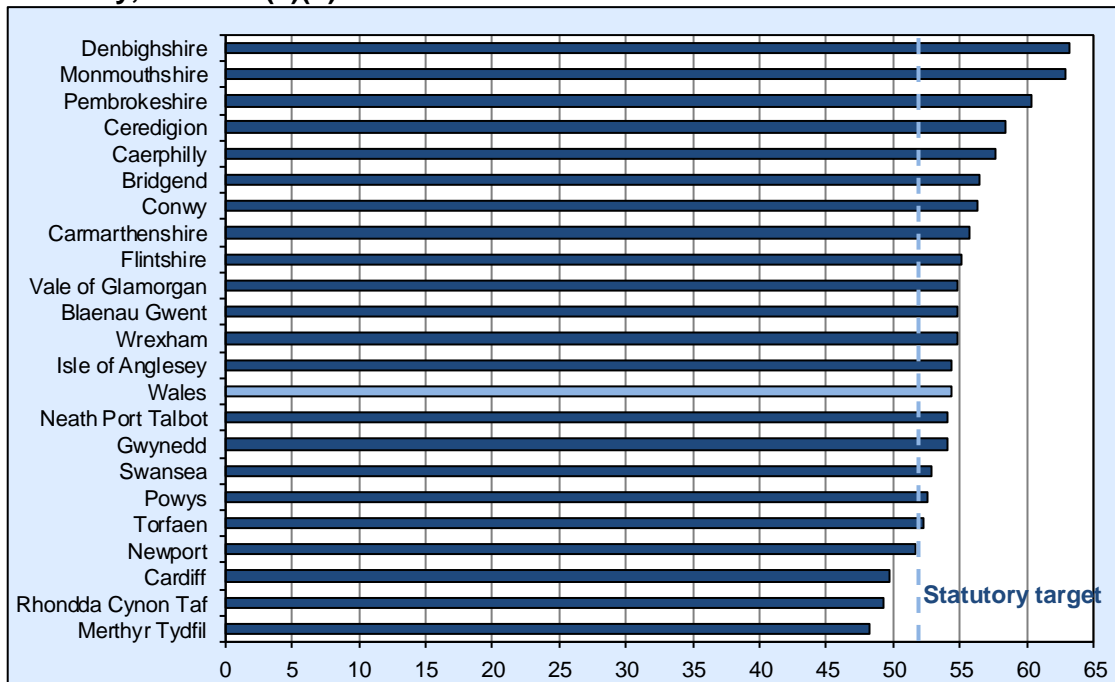
(a) Household and non-household waste, excluding abandoned vehicles.

(b) These figures are based on the new definition (municipal waste 'sent' for reuse/recycled/composted).

There has generally been an upward trend in the percentage of local authority municipal waste reused, recycled and composted across Wales. Whilst five authorities reported lower rates than in 2012-13, three of these still reported reuse/recycling/composting rates above the statutory target (under the new definition). Cardiff and Merthyr Tydfil were the exceptions, though Merthyr Tydfil, unlike Cardiff, has not previously reported rates above the target.

Reuse/recycling/composting rates in Monmouthshire and Pembrokeshire increased markedly since 2012-13, keeping these local authorities amongst those with the highest rates in Wales. Denbighshire remained the local authority with the highest waste reuse/recycling/composting rate in 2013-14.

Chart 2: Local authority municipal waste prepared for reuse/recycling/composting rates by local authority, 2013-14 (a)(b)



Source: WasteDataFlow

- (a) Percentage of household and non household waste (excluding abandoned vehicles) that have been reused, recycled or composted. The chart is ranked by the recycling rate for 2013-14.
- (b) These rates are calculated using the new definition (i.e. waste sent for disposal/treatment).

In 2013-14, 18 of the 22 local authorities in Wales reported reuse/recycling/composting rates that were higher than the statutory target of 52 per cent, set out in the current waste strategy “Towards Zero Waste”. The local authority with the highest reuse/recycling/composting rate in Wales was Denbighshire (63.2 per cent), whilst Merthyr Tydfil had the lowest rate (48.2 per cent).

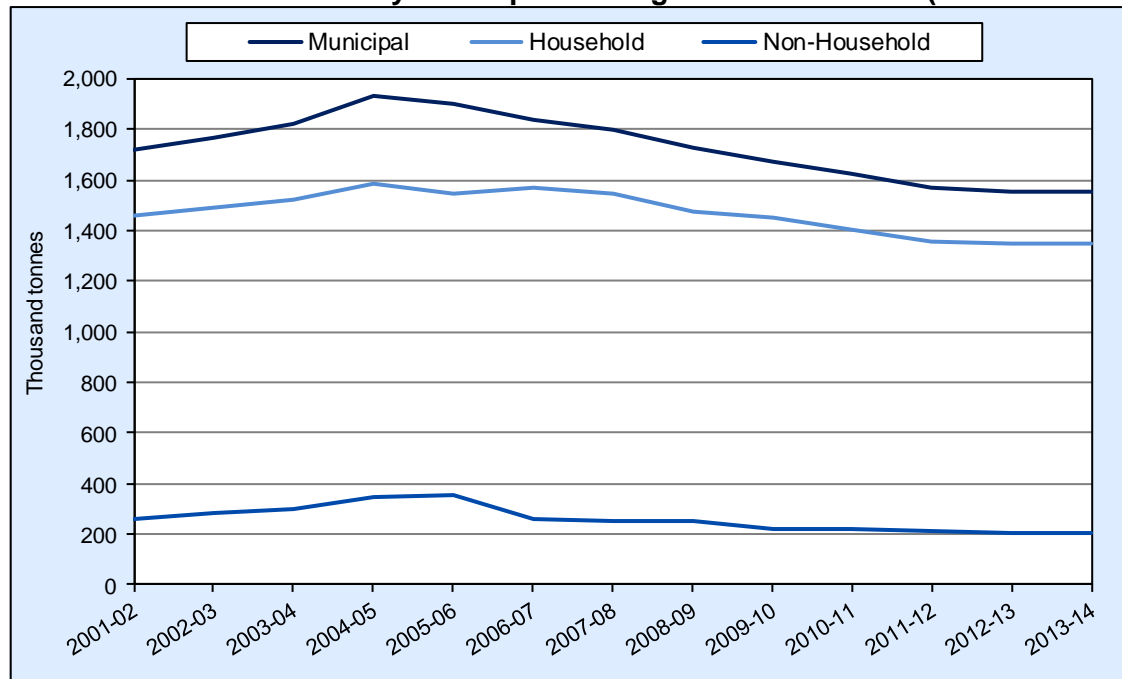
The overall rates and how they change across local authorities will probably be affected by people’s willingness to separate waste for recycling, but also by the various collection/recycling schemes that have been introduced. These schemes will differ, due to cost and contracts, and will have been introduced on different dates depending on the local authority.

2. Local authority municipal (household and non-household) waste generated

This section provides information on the total amount of local authority municipal waste generated (including household and non-household waste) that is collected, directly or from sites, by local authorities.

There are sometimes differences in the amount of waste collected and sent for disposal by a local authority, due to stockpiling of waste collected in a previous year and delays in reporting across periods. Therefore, waste sent for reuse/recycling/composting (new definition) during a particular year may have been collected in a previous year.

Chart 3: Total local authority municipal waste generated in Wales (Thousand tonnes) (a)



Source: WasteDataFlow

(a) Local authority municipal waste includes household and non-household waste, but excludes abandoned vehicles.

Following a steady historical increase, the total amount of local authority municipal waste (excluding abandoned vehicles) generated in Wales peaked at over 1.9 million tonnes in 2004-05, coinciding with the peak in household waste generated. The amount of local authority municipal waste generated in Wales has since been generally falling. However, over the last year the amount of waste generated increased slightly, by less than 1 per cent, with 1.56 million tonnes generated in 2013-14. This was due to an increase in the amount of non-household waste generated.

Table 3: Local authority municipal (household and non-household) waste generated in Wales

Thousand tonnes

	2008-09	2009-10	2010-11	2011-12	2012-13	2013-14
Household waste (a):						
Prepared for reuse/recycled/composted	534	586	627	667	684 (r)	708
Residual household waste	938	864	775	689	667 (r)	642
Total household waste	1,472	1,451	1,402	1,356	1,351	1,349
Non-household waste:						
Prepared for reuse/recycled/composted (b)	113	90	107	117	116 (r)	127
Residual non-household waste	140	130	112	95	87 (r)	81
Total non-household waste	253	219	219	212	203	208
Municipal waste:						
Prepared for reuse/recycled/composted (c)	646	676	735	784	800 (r)	834
Residual municipal waste	1,078	994	886	784	754 (r)	723
Total municipal waste (d)	1,724	1,670	1,621	1,567	1,554	1,557

Source: WasteDataFlow

(a) Household waste includes regular household collections, civic amenity site waste, waste collected for recycling/composting and waste from special collections such as collections of bulky household waste. Where local authorities collect non-household waste (i.e. from a business, school etc.) in the same collection round as household waste it may not be possible for them to provide an accurate split between the household and non-household waste collected.

(b) Includes local authority collected materials for recycling from commercial sources.

(c) Includes waste collected for reuse/recycling/composting plus waste collected by private and voluntary organisations.

(d) Includes household waste plus waste collected from non-household sources but excludes abandoned vehicles.

(r) Figures have been revised since published in the previous bulletin for 2012-13, as some waste was incorrectly classed as household.

The majority of local authority municipal waste generated continues to be household waste. Whilst the total amount of household waste generated continued to fall in 2013-14, non-household waste and total municipal waste both increased slightly.

Waste which is not prepared for reuse/recycling/composting and is therefore disposed of via landfill or other methods of disposal/treatment is known as residual waste. As can be seen in Table 3 above previously there was more residual waste than waste that was collected in preparation for reuse/recycled/composted. However, in recent years residual waste accounted for less than half of all waste generated.

3. Local authority municipal waste management

This section reports how local authority municipal waste is disposed of or treated. The figures shown in Table 4 relate to waste sent for disposal/treatment and will differ from those shown in Table 3, which is based on municipal waste generated and collected for disposal/treatment. The differences are mainly due to timing. For example, local authorities may have collected waste during the previous year, but stockpiled it for disposal/treatment at a later date. It should be noted that the statutory target for reuse/recycling/composting is the percentage of all local authority municipal waste generated that is sent for reuse/recycling/composting.

Figures shown for the previous years include refuse derived fuel and the compost-like output produced from mechanical biological treatment. These have been removed from figures for 2012-13 onwards in the right hand section of Table 4 as they are intermediate treatment processes rather than final recovery/disposal management methods.

Table 4: Management of local authority municipal waste by management methods (a)

						<i>Thousand tonnes</i>		
	2008-09	2009-10	2010-11	2011-12	2012-13		2012-13	2013-14
Composted	214	233	264	291	284 (r)	Composted (Statutory)	283	288
Recycled	433	443	471	493	529 (r)	Recycled (Statutory)	529	558
Incineration	32	35	38	51	72	Incineration with energy recovery	72	90
						Incineration without energy recovery	-	-
Landfill	1,035	931	826	710	641	Landfill	641	587
Other (b)	12	16	14	15	36	Other recovery (d)	2	5
Total (c)	1,724	1,659	1,613	1,560	1,563 (r)	Total (c)	1,527	1,528

Source: WasteDataFlow

(a) Includes household and non-household waste; excludes abandoned vehicles.

(b) Includes refuse derived fuel (RDF) and mechanical biological treatment (MBT).

(c) Note that the total is the total amount of waste sent and will therefore differ to the total given in Table 3.

(d) This includes other waste sent for recycling and/or composting that is not included in the statutory target definitions.

(r) Figures have been revised since previously published, due to the removal of waste sent for recycling and composting that had been incorrectly included.

The amount of waste disposed of in landfill continued to fall, with less than 0.6 million tonnes sent to landfill in 2013-14. In 2001-02, 92 per cent of waste was disposed of at landfill sites; whereas in 2013-14, 38 per cent was disposed of via this method. This is largely due to the increase in the amount of waste sent for composting or recycling, which when combined, accounted for 56 per cent¹ of local authority municipal waste management in 2013-14.

Local authorities may have been able to reduce the amount of waste they send to landfill because of the availability of funding from the Welsh Government, since 2001-02, to improve recycling collections. Landfill tax, payable by local authorities, is also an incentive to reduce the amount of waste disposed of in this way.

Further to the increase in recycling and composting of local authority municipal waste, there has also been an increase in the use of incineration in recent years, more than 99 per cent of which was incineration with energy recovery. Although the proportion of waste incinerated each year is small, the amount of local authority municipal waste disposed of via this method increased to almost 6 per cent in 2013-14. One reason for the increased use of incineration, particularly for waste that cannot be recycled, could be that the use of landfill sites is discouraged in the Welsh Government waste strategy and has become more expensive for local authorities due to the landfill tax.

¹ This percentage differs from the statutory target rate as it includes recycling/composting of waste outside of the statutory target definition ('Other recovery'), and is based on all waste sent for recycling/composting, rather than all waste generated.

Key Quality Information

1. Previously the term 'Municipal Waste' as used in the UK was used in waste policies and nationally reported data to refer to waste collected by local authorities. In fact the definition of municipal waste as described in the Landfill Directive includes both household waste and that from other sources similar in nature and composition, which will include a significant proportion of waste generated by businesses and not collected by local authorities. In 2010, discussions with the EU Commission led to the reinterpretation of the term 'municipal waste' and the definitions supporting national targets have changed to reflect this.
2. To remove ambiguity, for the purposes of this release, 'Local Authority Municipal waste' is as defined in the Waste (Wales) Measure 2010. This and other definitions can be found in the Glossary at the end of the bulletin.
3. The Programme for Government 2011 -2016, which is the current government programme, outlines the Welsh Government's commitment to becoming a "one planet nation", putting sustainable development at the heart of government. One of the outcome indicators within the Programme for Government is: 'Percentage of municipal waste recycled or composted'; this is based on the National Strategic Indicators definition.

Data source and coverage

4. From 1996-97 to 2003-04 data on municipal waste was collected through the Municipal Waste Management Survey. This survey was sent to all local authorities in Wales and England. From 1998-99 Wales achieved a 100 per cent response rate.
5. From 2004-05 this information was collected using an online reporting system for waste data called 'WasteDataFlow' www.wastedataflow.org. In Wales this was formerly managed by the Environment Agency, now Natural Resources Wales, and the Waste Strategy Branch of the Welsh Government extract the information for the report from WasteDataFlow.
6. Under regulation 6 of the Landfill Allowances Scheme (Wales) Regulations 2004 (LAS Regulations) local authorities in Wales are required to report quarterly information on collected municipal waste; the amount of municipal waste sent to landfills and the amount of municipal waste sent to other facilities. This information is submitted by local authorities via WasteDataFlow . The monitoring authority (Natural Resources Wales) are then responsible for validation of this information.
7. WasteDataFlow guidance and factsheets are readily available to local authorities online. This guidance includes a system manual, list of all Wales specific questions and list of Wales specific guidance. Generally the questions are straightforward. However, further explanation for the more complex questions can be found in the general guidance. Furthermore, question-by-question guidance is being developed. Natural Resources Wales also supports Welsh local authorities on any local authority specific WasteDataFlow issues.
8. WasteDataFlow is subject to continual improvement and development that can impact on the way that data is entered and introduce new data reports based on new data requirements. The nature of introducing these changes can produce data interpretation issues, such as with historic data already in the system. Some changes can be complex in nature producing impacts in reporting that may not be fully realised initially. All changes to the system are carefully monitored for any discrepancies between data entry and reporting. In the event that discrepancies arise, the WasteDataFlow system is adjusted and any previously published data is revised or caveated accordingly.

Quality

9. The United Kingdom Statistics Authority has designated these statistics as National Statistics; in accordance with the Statistics and Registration Service Act 2007, and signifying compliance with the Code of Practice for Official Statistics.

Designation can be broadly interpreted to mean that the statistics:

- meet identified user needs;
- are well explained and readily accessible;
- are produced according to sound methods, and
- are managed impartially and objectively in the public interest.

Once statistics have been designated as National Statistics it is a statutory requirement that the Code of Practice shall continue to be observed.

10. National Statistics are produced to high professional standards set out in the Code of Practice for Official Statistics. They undergo regular quality assurance reviews to ensure that they meet customer needs. They are produced free from any political reference.
11. These statistics adhere to the Welsh Government's [Statistical Quality Management Strategy](#).

Symbols

12. The following symbols may have been used in this release:

- = negligible (less than half the final digit shown)
- . = not applicable
- .. = not available
- ~ = not yet available
- * = disclosive or not sufficiently robust for publication
- p = provisional
- r = revised

Comparability

13. From 1 April 2012, there were changes in definitions relating to local authority municipal waste generated and the percentage prepared for reuse, recycled or composted in Wales. As a result, from 2012-13 onwards, figures published within this annual statistical bulletin will be directly comparable with those in the quarterly statistical release and the National Strategic Indicator.
14. The change in definition means data for 2012-13 onwards will differ from the figures previously shown in the annual statistical bulletin. The majority of information shown for earlier years in the bulletin relates to waste that was collected for disposal/treatment; however, under the new definition the figures relate to waste that was actually sent for disposal/treatment.
15. For further information on the specific details relating to the changes in definitions please refer to the Statistical Article accessed via the following link: [Local Authority Municipal Waste Management - Change in Definition](#). The article looks at historic data using both the previous and new definitions in order to make users fully aware of the impact these changes have on the data and how they use it.
16. Information on abandoned vehicles has previously been reported in the annual statistical bulletin. However, as abandoned vehicles are not recorded by all local authorities in WasteDataFlow (as they are not classed as local authority municipal waste) and due to possible concerns about the quality of the data, it has been decided to omit the information from this and future editions of the bulletin.

Accuracy

17. There is an apparent inconsistency between the total waste figures given for 2008-09 to 2013-14 (old definition) in Tables 3 and 4. This is because there is a slight mismatch between the amount collected and the amount sent for treatment. This can be a matter of timing if, for example, authorities stockpile waste for later treatment. There may also be some inconsistencies in the measurement, since the waste is weighed when collected and again when it is sent for treatment. In addition, there may also be loss in weight through various treatment processes. Natural Resources Wales validate all local authority returns and require that the difference between the amount collected and the amount sent for treatment must not differ by more than 10 per cent in any quarter, unless a valid explanation can be given. Natural Resources Wales have also placed more emphasis on authorities providing more evidence in relation to their waste statistics from 2012-13 onwards.
18. Where local authorities collect non-household waste (i.e. from a business, school etc.) in the same collection round as household waste, it may not be possible for them to provide an accurate split between the household and non-household waste collected. This may present an element of bias in the data.
19. In the tables where figures have been rounded to the nearest final digit, the constituent items may not add up exactly to the total.
20. In the past data quality issues have arisen related to the mis-specification of data items in the returns and this has led to revisions of data for previous years. However, this mainly relates to information collected via the Municipal Waste Management Survey. More recently, mis-reporting of data is less of an issue, though it should be noted it is not always due to inaccurate reporting at the time, but for example if incidents occur which are out of the local authority's control.

Validation

21. Under regulation 6 of the Landfill Allowances Scheme (Wales) Regulations 2004 (LAS Regulations), local authorities in Wales are required to report quarterly information on local authority collected municipal waste; the amount of local authority municipal waste sent to landfills and the amount of local authority municipal waste sent to other facilities. This information is submitted by local authorities via WasteDataFlow. The monitoring authority (Natural Resources Wales) is then responsible for validation of this information. Reporting requirements are detailed in the Natural Resources Wales reporting protocol published on WasteDataFlow 'LAS Guidance on reporting and notices', May 2008. It includes deadlines for when local authorities need to report prompt (Level 30) and accurate (Level 35) data and the deadlines for making changes to the data.
22. Natural Resources Wales (NRW) has six weeks to validate the data. Validation involves a procedure of checking that all relevant WasteDataFlow questions have been completed by the local authorities and any discrepancies in calculations between entered inputs and outputs are identified. Any anomalies are then communicated to the individual local authorities and remedial action is taken to resolve them. Post validation, NRW also request local authorities to provide evidence in relation to their waste data, which is an ongoing process throughout the scheme year.

Revisions

23. If local authorities wish to change previously submitted data they must submit a roll back request to the Waste Strategy Branch of the Welsh Government and Natural Resources Wales, detailing the reasons for the changes. This prevents any alterations being made that the Welsh Government is unaware of and acts as an incentive for local authorities to enter accurate data.
24. In order to validate data for previous years, figures are prepared by reproducing calculations from raw data, where possible. This can uncover mistakes in the initial calculations. Where data has been revised it will be clearly marked with an (r).

25. In Table 1 the household rate for 2012-13 has been revised. This is due to a change in the methodology used to apportion household and non-household waste more accurately.
26. Data for 2012-13 in Table 3 have been revised. In the previous version of this bulletin, rubble and plasterboard collected from household sources was included in household waste, whereas it should have been allocated to non-household waste.
27. Data for 2012-13 in the left hand section of Table 4 have been revised. In the previous version of this bulletin, some waste was incorrectly allocated to the composting and recycling categories. This has now been removed.
28. We follow the Welsh Government's statistical revisions policy, details of which are available at: <http://wales.gov.uk/statistics-and-research/about/statement-of-compliance/revisions-errors-postponements/?lang=en>

Accessibility

29. Additional data are available to download from our StatsWales interactive website at the following link: <https://statswales.wales.gov.uk/Catalogue/Environment-and-Countryside/Waste-Management> . Data are available for annual municipal waste, quarterly municipal waste, Construction & Demolition waste, and Industrial & Commercial waste.
30. The National Strategic Indicator data can also be downloaded from the StatsWales website and be accessed via the following link: <https://statswales.wales.gov.uk/Search?Query=national+strategic+indicators>

Coherence with other statistics

31. There is a National Strategic Indicator (NSI), which is used to measure performance of local authorities at a national level, on the percentage of municipal waste prepared for reuse and/or recycled, including source segregated biowastes that are composted or treated biologically in another way. Prior to 2012-13, NSI figures will differ from those shown in this annual statistical bulletin, but from 2012-13 onwards, the NSI figures will be directly comparable with the figures shown in this statistical bulletin under the new definition.

Users and uses

32. Waste statistics are important for policy development and planning the delivery of public services, such as waste management. Some of the uses include:
 - Monitoring of progress towards waste targets
 - Statutory requirements for reporting to the European Union
 - Policy development
 - Advice to Ministers
 - Informing debate in the National Assembly for Wales and beyond
 - Geographic profiling, comparisons and benchmarking
33. There are a variety of users of waste statistics including national and local government, researchers, students and individual citizens.
34. More specifically, data on waste management are collected in order to monitor progress towards national and local targets; in particular, against the requirements of the EU Landfill Directive. The aim of this Directive is to reduce the amount of methane emitted from landfill sites by setting targets for Member States to reduce the amount of biodegradable municipal waste sent to landfill. Also in its current waste strategy, "Towards Zero Waste", the Welsh Government set statutory targets of recycling 52 per cent of waste by 2012-13 and 70 per cent of waste by 2024-25.

Related statistics for other UK countries

35. More information on municipal waste management statistics in England is available on the Department for Environment, Food and Rural Affairs website:
<http://www.defra.gov.uk/statistics/environment/waste/>
36. More information on municipal waste management statistics in Scotland is available on the Scottish Environment Protection Agency website:
http://www.sepa.org.uk/waste/waste_data.aspx
37. More information on municipal waste management statistics in Northern Ireland is available on the Northern Ireland Environment Agency website:
http://www.doeni.gov.uk/nea/waste/municipal_data_reporting.htm

Glossary

Composting

An aerobic, biological process in which organic wastes, such as garden and kitchen waste, are converted into a stable granular material which can be applied to land to improve soil structure and enrich the nutrient content of the soil.

Compost-like output

When mixed municipal solid waste is biologically treated in Mechanical Biological Treatment (MBT) plants, the output is known as a 'compost-like-output'.

Dry recycling

The recycling of dry materials, such as paper, card, cans, plastic bottles, mixed plastic and glass.

Household waste

Materials collected directly from households (kerbside collections), taken to bring sites (including civic amenity sites) or collected by private and voluntary organisations not included elsewhere.

Landfill sites

Any areas of land in which waste is deposited are termed landfill sites. They are often located in disused mines or quarries. In areas where these are limited or no ready-made voids exist, the practice of landraising is sometimes carried out; waste is deposited above ground and the landscape is contoured.

Local authority municipal waste

Household and non-household waste that is collected and disposed of by local authorities. It includes regular household collections, specific recycling collections, special collections of bulky items, waste received at civic amenity sites and waste collected from non-household sources (e.g. rubble, incinerator residues, matter from beach cleansing and plasterboard). Local authority municipal waste excludes abandoned vehicles.

Non-household municipal waste

All waste collected by an authority or its contractors, other than wastes within Schedule 1 and 2 of the Controlled Waste Regulations 1992. This includes any other wastes collected by an authority, such as municipal parks and gardens waste, industrial or commercial waste and waste resulting from the clearance of fly-tipped materials.

Prepared for reuse

See 'Reuse' below.

Recycling

Any recovery operation by which waste materials are reprocessed into products, materials or substances, whether for the original or other purposes. It does not include energy recovery and the reprocessing into materials that are used as fuels of backfilling operations.

Residual waste

Waste that is not prepared for reuse, recycled or composted.

Reuse

The use of household waste removed from the local authority collected municipal waste stream (e.g. furniture from households, including that collected on behalf of a local authority by third parties) for its original or a different purpose, without processing or treatment in a waste recovery operation, other than one which has the purpose of repairing or refurbishing the household waste.

Reuse/Recycling/Composting Rate (Statutory target definition)

Percentage of local authority municipal waste generated that is recycled, reused or composted calculated at time of distribution to landfill or recycling/composting contractors. Therefore based on the amount of waste **sent** for reuse, recycling or composting, rather than **collected** for the purpose of being reused, recycled or composted.

Treatment

Physical, thermal, chemical or biological processes, including sorting, that change the characteristics of the waste in order to reduce its volume or hazardous nature, facilitate its handling or enhance recovery.

Further Information

Additional data, broken down by management methods, recycling sources and local authority, are also published on: www.statswales.wales.gov.uk

Further information on waste and recycling in Wales can be found on the Statistics for Wales website: <http://wales.gov.uk/statistics-and-research/local-authority-municipal-waste-management/?lang=en>

Current Welsh Government waste strategy "Towards Zero Waste": http://wales.gov.uk/topics/environmentcountryside/epq/waste_recycling/publication/towardszero/?lang=en

More general information can be found on the Natural Resources Wales website: <http://naturalresourceswales.gov.uk/?lang=en>

For any further enquiries please contact:

Chris Wright
Natural Resources
Welsh Government
Cathays Park 2
Cardiff
CF10 3NQ
Tel: 029 2082 1760
E-mail: Chris.Wright@wales.gsi.gov.uk

Don A'Bear
Knowledge and Analytical Services
Welsh Government
Cathays Park
CF10 3NQ
Tel: 029 2082 6768
e-mail: stats.environment@wales.gsi.gov.uk

Feedback

We actively encourage feedback from our users. If you have comments on any issues relating to this statistical bulletin please contact us on: stats.environment@wales.gsi.gov.uk



All content is available under the Open Government Licence v3.0, except where otherwise stated.

<http://www.nationalarchives.gov.uk/doc/open-government-licence/version/3/>