

CYLCHLYTHYR IECHYD CYMRU



Llywodraeth Cymru
Welsh Government

Dyddiad cyhoeddi: 16 Tachwedd 2021

STATWS: GWEITHREDU

CATEGORI: POLISI

Teitl: Rôl a Darpariaeth Iechyd Deintyddol y Cyhoedd yng Nghymru

Dyddiad Adolygu: Tachwedd 2024

I'w weithredu gan:
Prif Weithredwyr, Pob Bwrdd Iechyd ac
Iechyd Cyhoeddus Cymru

Angen gweithredu erbyn:
Yn syth

Anfonwr: Alex Slade, y Dirprwy Gyfarwyddwr Gofal Sylfaenol
a Warren Tolley, y Dirprwy Brif Swyddog Deintyddol

Enwau Cyswllt yn Llywodraeth Cymru:
Andrew Powell-Chandler, Pennaeth Polisi Deintyddol
andrew.powell-chandler@llyw.cymru
Warren Tolley, Dirprwy Brif Swyddog Deintyddol
Warren.tolley@llyw.cymru

Dogfen(nau) amgaeedig: Canllawiau a dogfennau ar y mater uchod

Crynodeb

1. Diben y Cylchlythyr Iechyd Cymru hwn yw disgrifio'r pethau disgwylidig o ran:

- swyddogaethau iechyd deintyddol y cyhoedd yn genedlaethol; a
- darparu cymorth a chynghor arbenigol iechyd deintyddol y cyhoedd i gyrff y GIG a rhanddeiliaid iechyd y geg eraill yng Nghymru.

Camau gweithredu

2. Gofynnir i Brif Weithredwyr cyrff y GIG sicrhau bod ymgynghorwyr iechyd deintyddol y cyhoedd ac adnoddau eraill yn gweithio er lles y system gyfan yng Nghymru a bod y ddarpariaeth yn cyd-fynd â'r canllawiau hyn.

3. Mae'r cylchlythyr hwn yn rhoi canllawiau i Iechyd Cyhoeddus Cymru, Byrddau Iechyd, Addysg a Gwella Iechyd Cymru a chyrff eraill y GIG ar ddarpariaeth cyngor a chymorth iechyd deintyddol y cyhoedd yng Nghymru. Mae'n disodli Cylchlythyr Iechyd Cymru – WHC/2008/057.

Yn gywir,



Alex Slade, Dirprwy Gyfarwyddwr Gofal Sylfaenol



Warren Tolley
Dirprwy Brif Swyddog Deintyddol Cymru

Role and provision of Dental Public Health in Wales

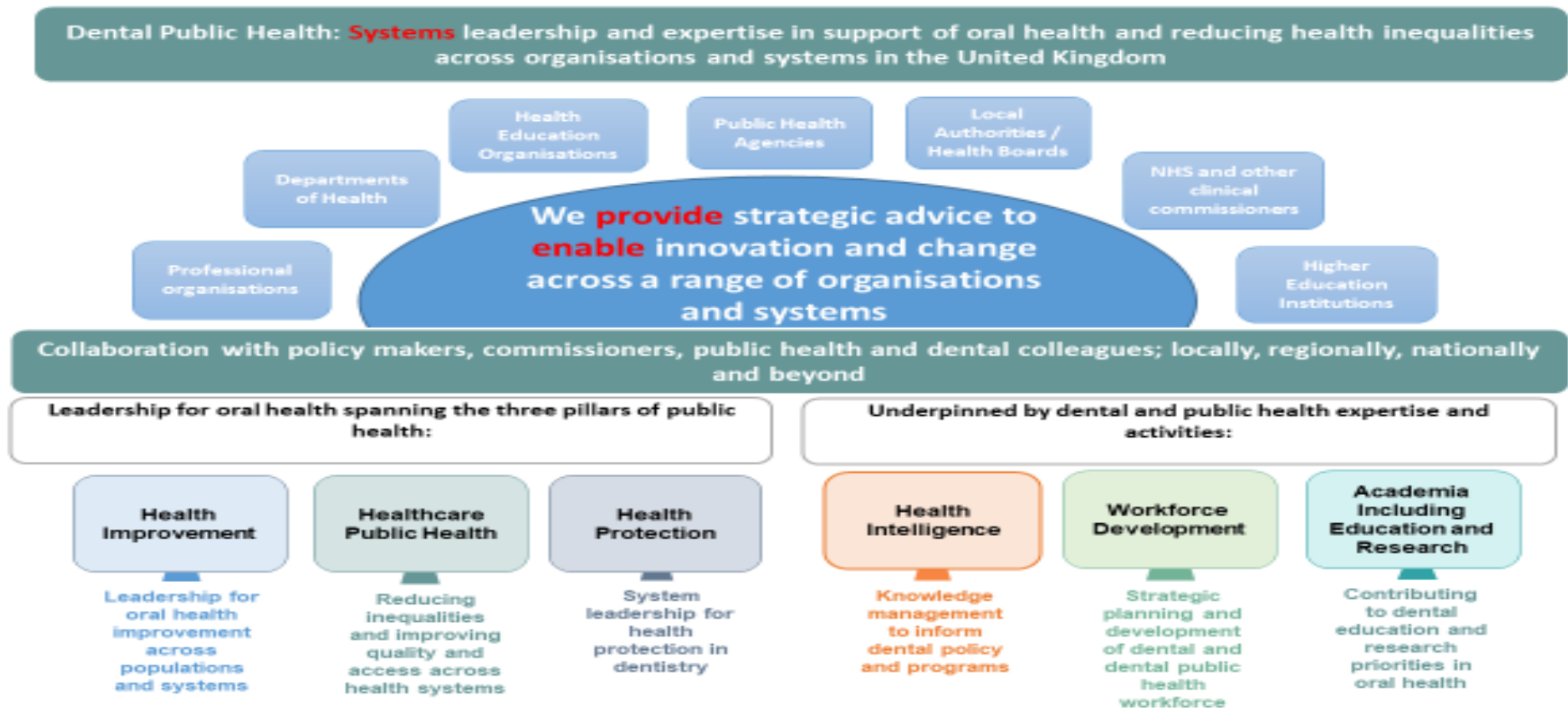
1. Public Health Wales should retain a minimum of three whole time equivalent Consultants in Dental Public Health, together with supporting staff and resources to deliver to the role described in Annex 1 and the Faculty of Public Health document¹
2. The Welsh Government has a long-term agreement with Public Health Wales to provide dental public health expertise to the structures and systems in Wales, including advice and support to Welsh Government, Health Boards (HBs), Health Education and Improvement Wales (HEIW), Welsh Dental Committee (WDC), Clinical Dental Leads, other relevant organisations and national advisory committees or forums.
3. Undertake regular dental epidemiological programmes to determine the current oral health and well-being status of Wales and describe existent inequalities across the life-course.
4. Determine inequities present in the provision and utilisation of NHS dental service (e.g. oral health needs assessments)
5. Understand the impact of poor oral health on general health and well-being across the life-course
6. Describe the impact of current oral service provision on sustainability and promote The Well-being of Future Generations (Wales) Act
7. Provide input into the delivery of A Healthier Wales, workforce development and provision to ensure a dental public health value-based approach
8. Ensure a dental public health leadership (including a value-based approach) to NHS dental services reform including dental services working collaboratively with wider health and social care services e.g. as a part of a cluster
9. Work with patients and the public in a participatory approach to promote co-production and co-design of dental public health activities
10. Promote healthy behaviours and healthy choices across the life-course and focus on early years to secure a healthy trajectory for future generations across Wales
11. Provide dental public health advice on dental quality and safety systems including quality improvement and advice on health protection related to dental services and oral health programmes
12. Provide strategic advice, national leadership and co-ordination of oral health improvement programmes such as Designed to Smile as described in WHC(2017)023

¹ Faculty of Public Health, Functions and Standards of a Public Health System

13. Advise on evidence base, monitoring and evaluation of key oral health programmes and any innovative local/regional/national dental services transformation programmes

14. Deliver speciality training in dental public health and commission or promote high quality research in dental public health

Annex 1. Role of the Dental Public Health in the United Kingdom²



V11
02.12.20

² Dental Public Health: Connect, Challenge and Change by the BASCD Consultants and Specialist Executive Group

Annex 2

National Dental Public Health Programmes and specific funding for certain dental public health functions (2021)

Dental Public Health Programme	Funding from Dental Policy, Welsh Government	Comments
<i>General Dental Services Reform Programme</i>	Staff costs: One Band 7 Senior Project Manager One Band 5 project support officer posts Other non-staff cost as agreed with Welsh Government on an ongoing basis	Non-staff costs: production of programme products, reports, communication, translation, commissioning of any research/evaluation, organisation and delivery of events, workshops etc
<i>Designed to Smile</i>	Annual cost for staff costs borne by Public Health Wales. Non-staff cost borne by Welsh Government	Website, programme products, translation etc (Annual funding for delivery of the programme goes directly to Health Boards. Community Dental Services are responsible for the programme delivery)
<i>Oral Health Intelligence + others</i>	Recurrent funding has been made available to improve oral health intelligence and other capacity in dental public health. Funding for Training and Calibration (T&C) event for dental epidemiology: Depending on types of survey, also non-staff costs.	Band 7 Data Analyst (permanent). 50% of Speciality Training Post in Dental Public Health. Multiple dental information/datasets exists and thus opportunity to pull them together into a 'dental datapool' and analyse to inform policy and planning
<i>Dental Public Health practitioner/Dental Practice Advisor role</i>	6 sessions a month - supporting dental public health consultants in their systems role of improving Dental Quality and Safety System in Wales including quality improvement	National design and co-ordination of Primary Dental Care Dental Annual Self-Assessment Tool and Bi-annual Primary Care Dental Quality and Safety Forum
<i>Welsh Oral Health Information Unit (WOHIU)</i>	Hosted by Cardiff University School of Dentistry through SLA between PHW and Cardiff University	Essential unit for delivery of dental epidemiology programme in Wales