

Appendix F

BWEA Presentation

BWEA Cymru Members Meeting

Research to Assess and Validate Capacity of SSA Identified In Technical Advice Note 8

Tuesday 12th January 2010

Simon Power (*Arup*)
Dan Patterson (*Arup*)

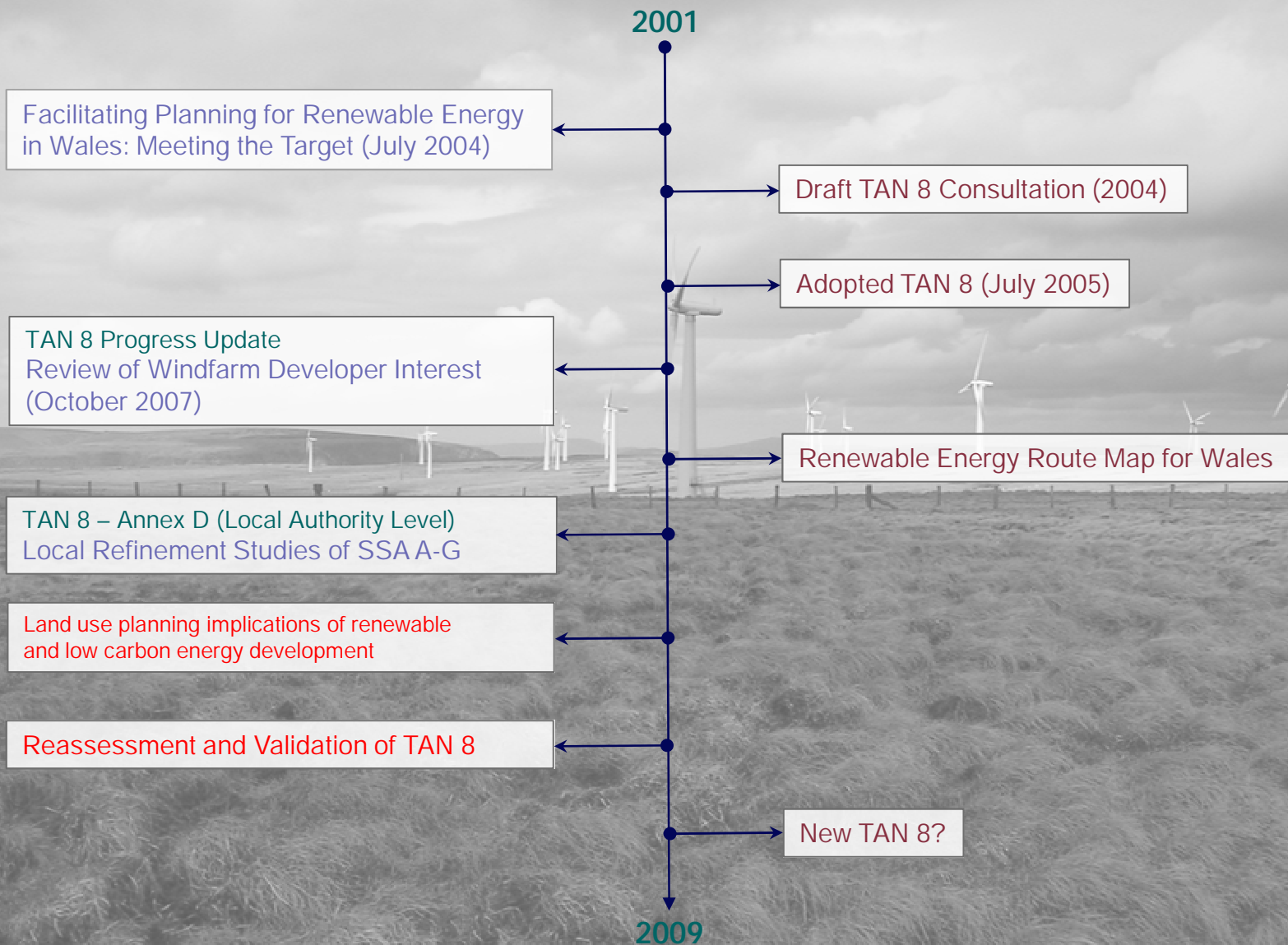


ARUP

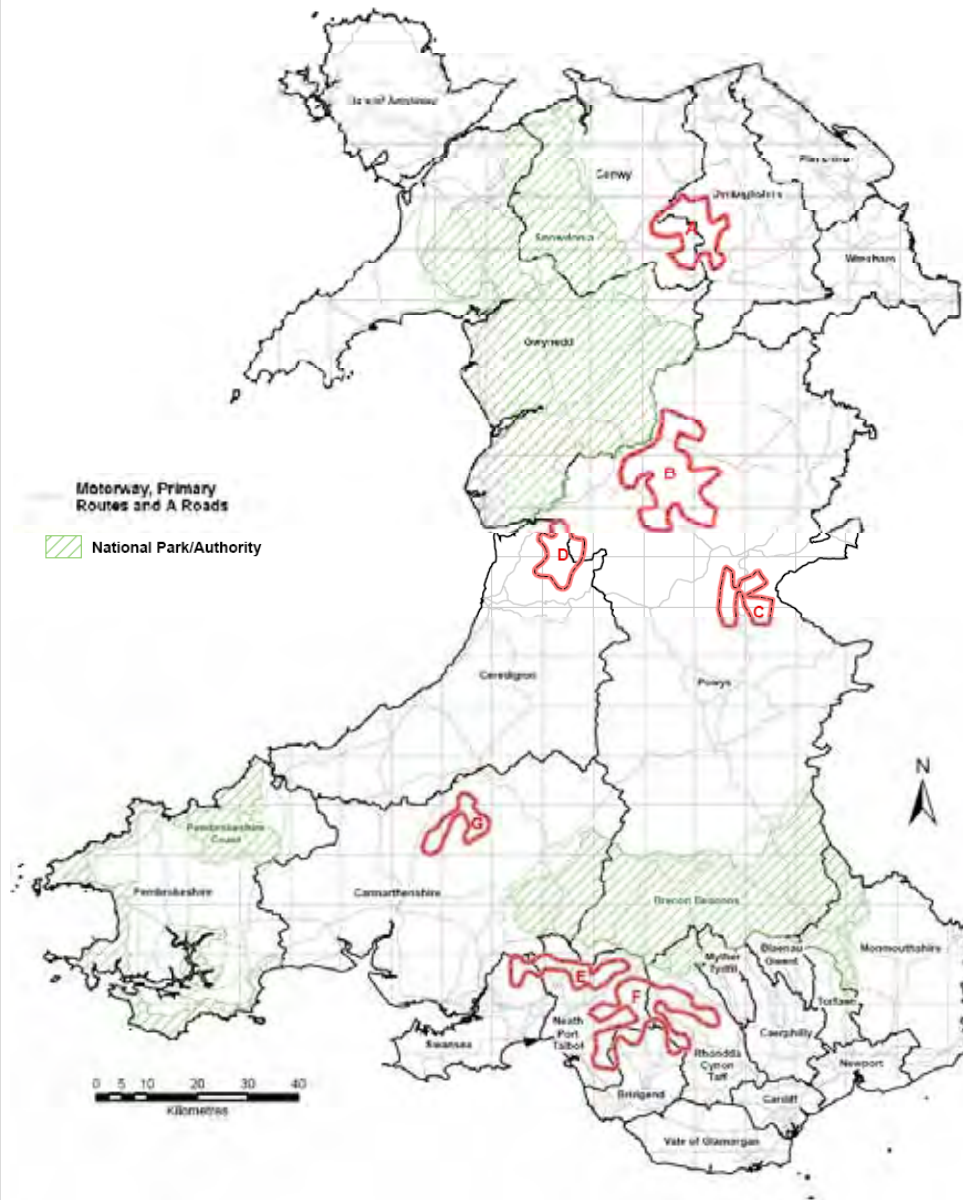
Presentation Structure

1. Brief historical context of Technical Advice Note 8 – Onshore Wind
2. 2009/10 Update Contract
3. Draft Results
4. Draft Conclusions
5. Questions

Historical Evolution of TAN 8

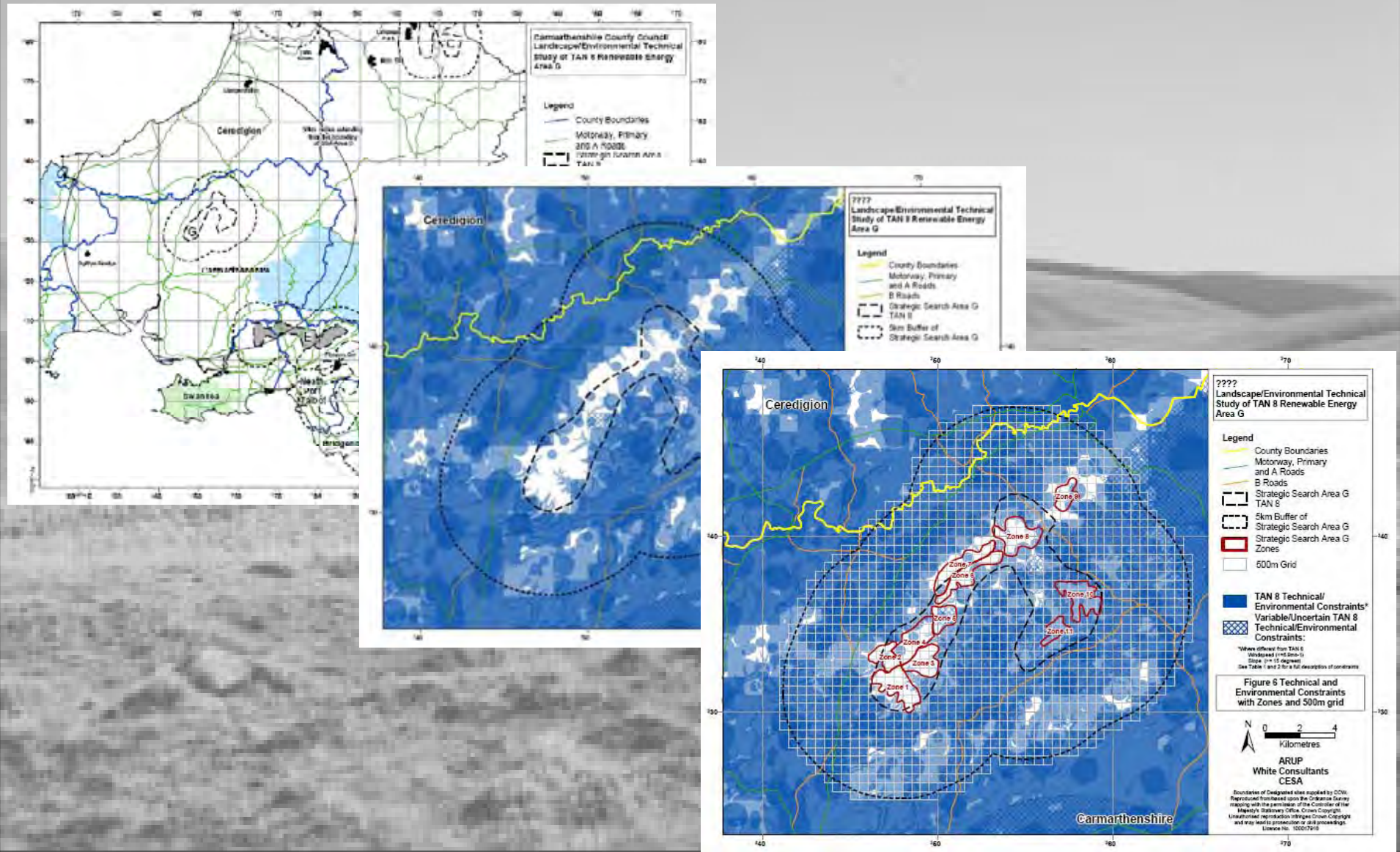


TAN 8 – Development of Final Output



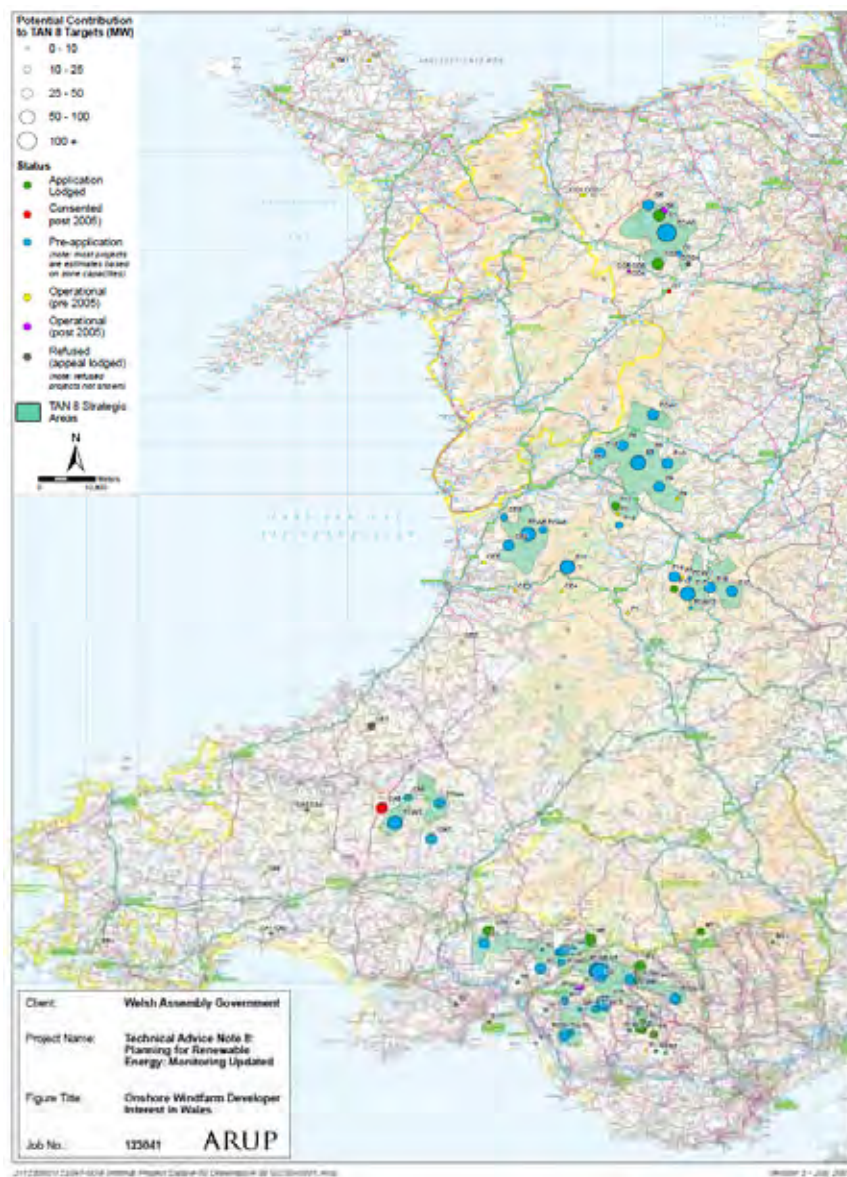
Strategic Search Area	Rated Capacity Output (MW) Draft TAN 8	Rated Capacity Output (MW) Garrad Hassan Report Maximum Theoretical Capacity	Final TAN 8 Totals (MW)
A- Clocaenog Forest	200	212	140
B-Carno North	200	430	290
C-Newtown South	100	98	70
D-Nant-y-Moch	100	212	140
E- Pontardawe	100	152	100
F-Coed Morgannwg	350	430	290
G-Brechfa Forest	150	132	90
Total	1200	1666	1120

Annex D TAN 8 – Local SSA Refinement



ARUP

Where Are We Currently and What Are We Planning For?

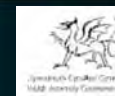


Arup, 2007

Strategic Search Areas	Application lodged	Consented	Operational	Operational pre-2005	Refused	Grand Total
A	50.5	64.5	21.25		58	279.25
B	281.1			63.35		580.45
C	336.7					336.7
D						252
E	114.3	43				263.3
F	120.5	10.4	21		39	678.9
G		30				267.6
Outside SSA	18.3	17.9	17.05	183.15	40.9	337.45
Grand Total	921.4	165.8	59.3	246.5	137.9	2995.65

Welsh Assembly Government, 2009

No spatial context to 2009 data



ARUP

Reassessment and Validation of TAN 8

Project Brief & Methodology

Project Aims

- Implementation of current best practice in refining onshore renewable energy resources;
- Accurate monitoring on progress towards TAN 8 onshore wind targets; and
- To introduce a well-defined timeline to successfully develop the SSAs to full capacity.

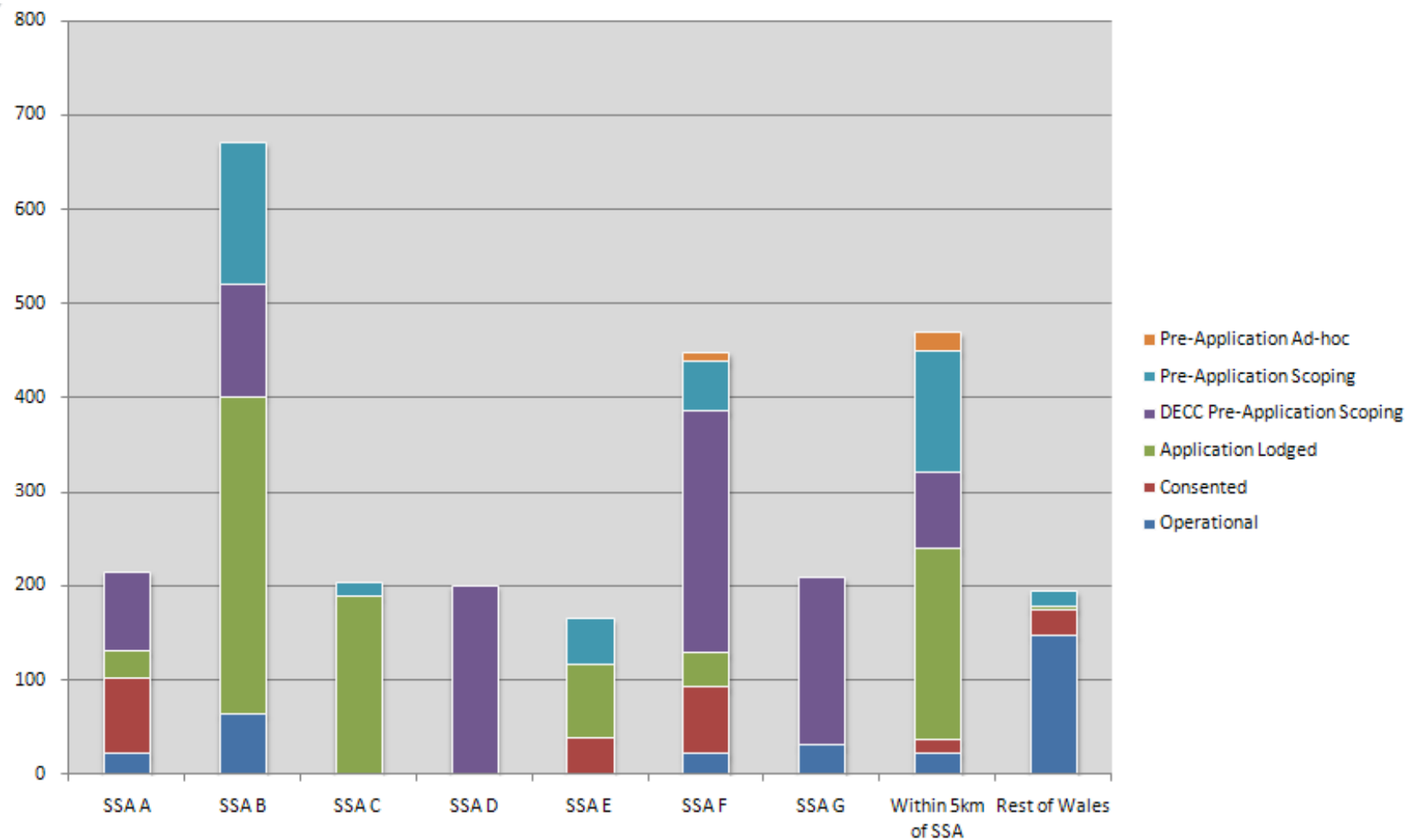
Project Methodology

- Collection of comprehensive information on windfarm developments in each SSA;
- Identification of undeveloped areas within SSA for potential future development with variable residential buffer distances;
- Assessment of variable constraints and impacts on undeveloped areas within SSA; and
- Timeline for the possible development of theoretical wind farm developments.

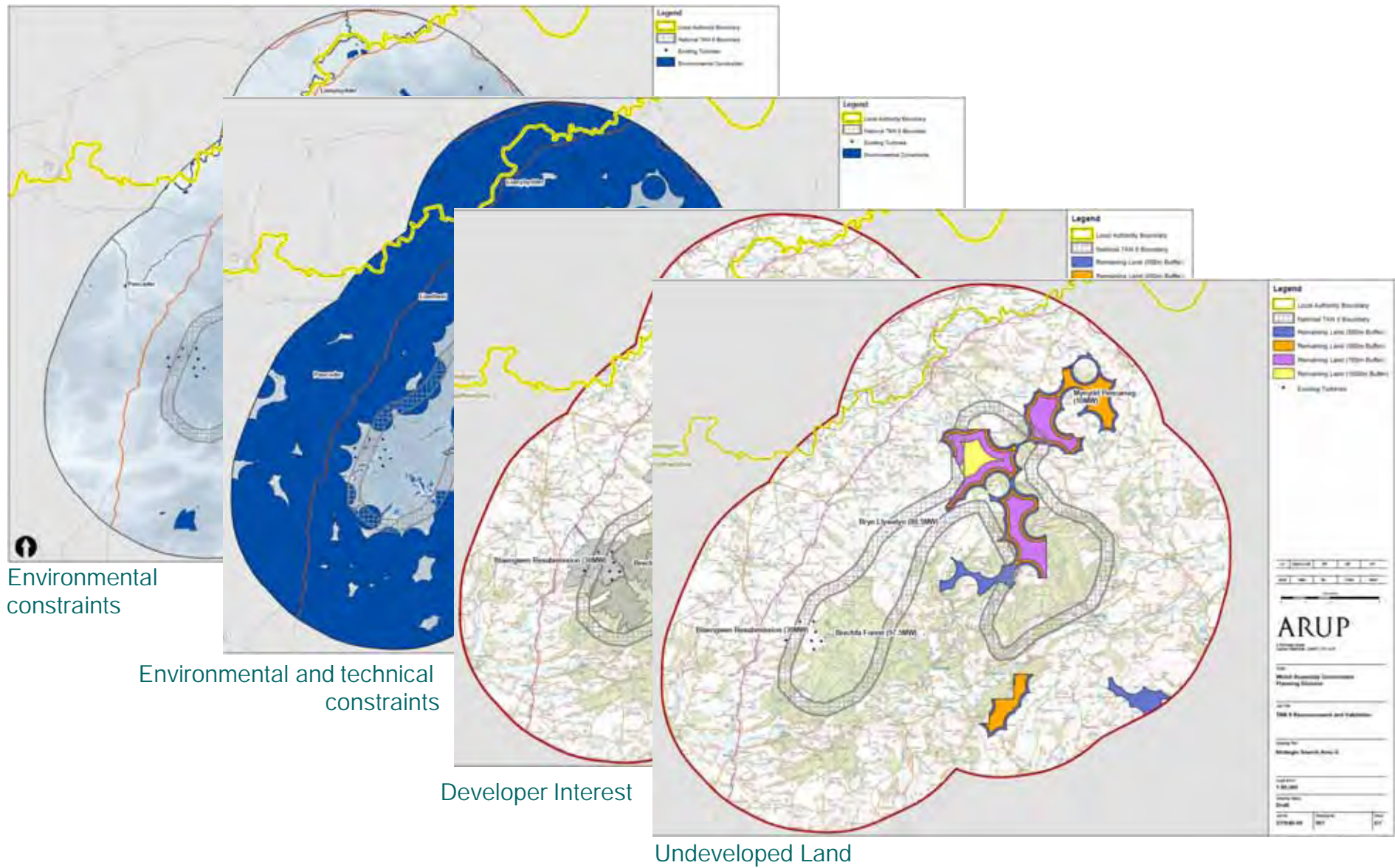


ARUP

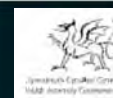
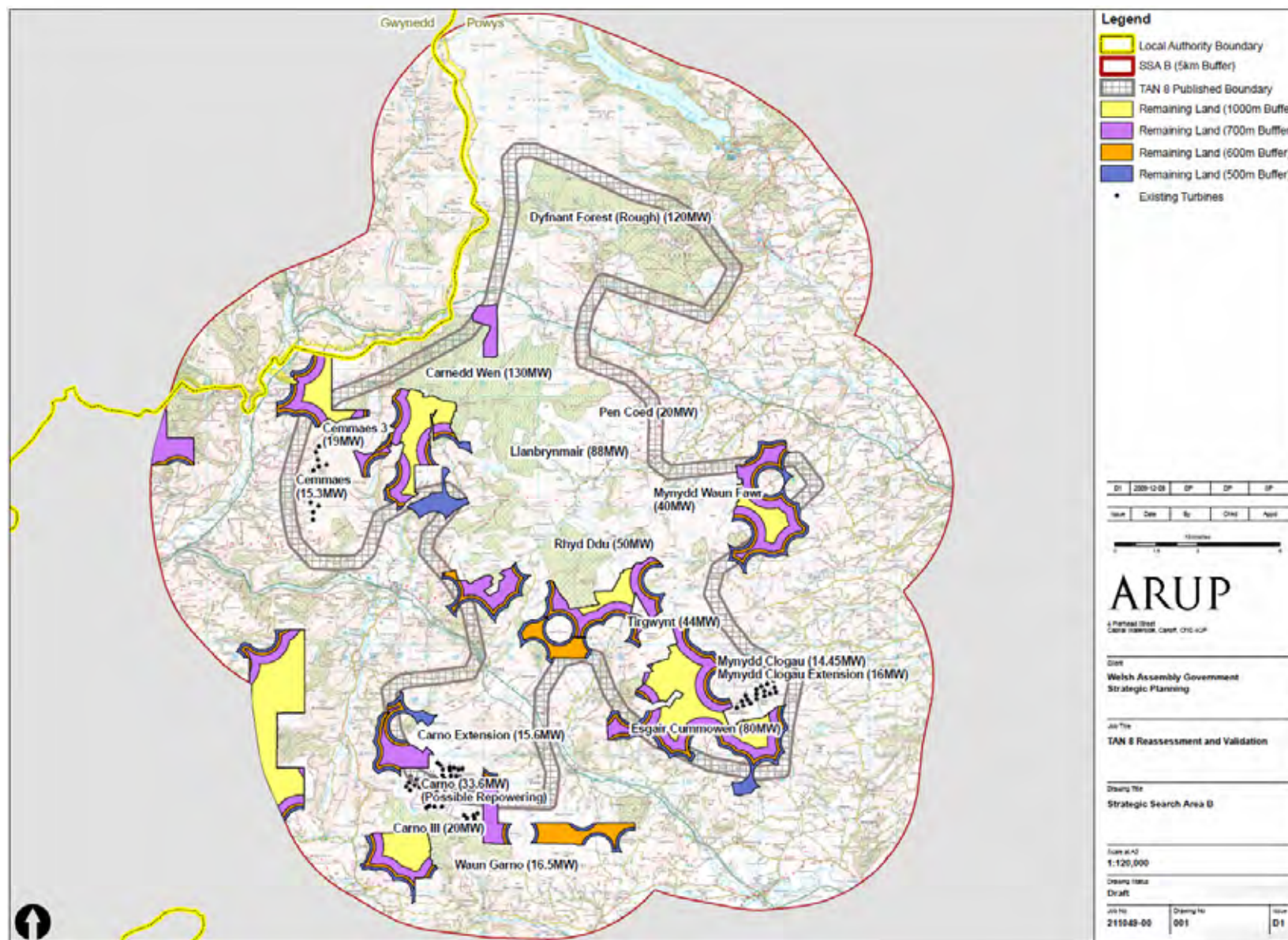
Developer Interest January 2010



Draft Study Results – Constraints Exercise

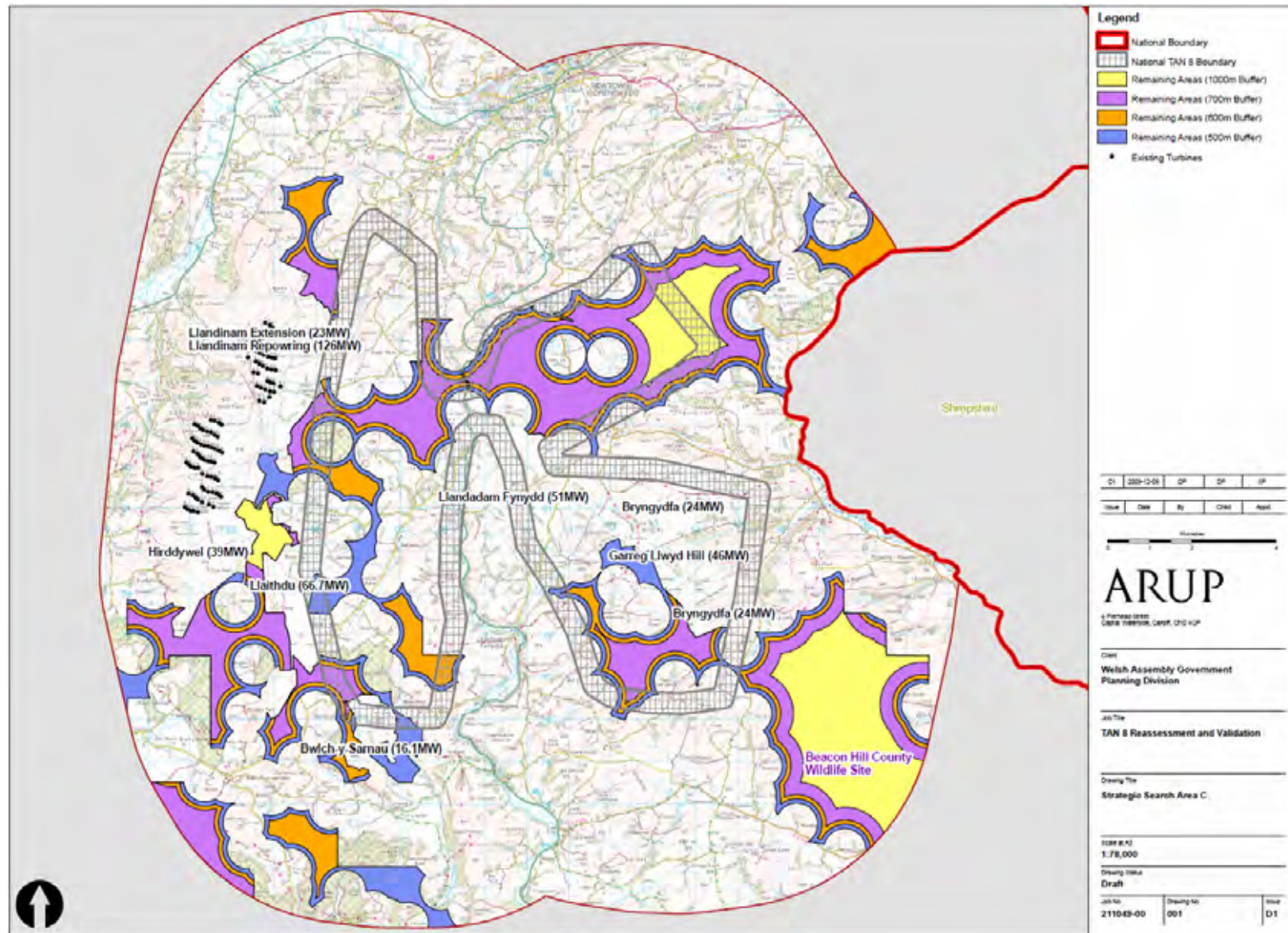


Draft Study Results – Identifying Areas of Less Constrained Land



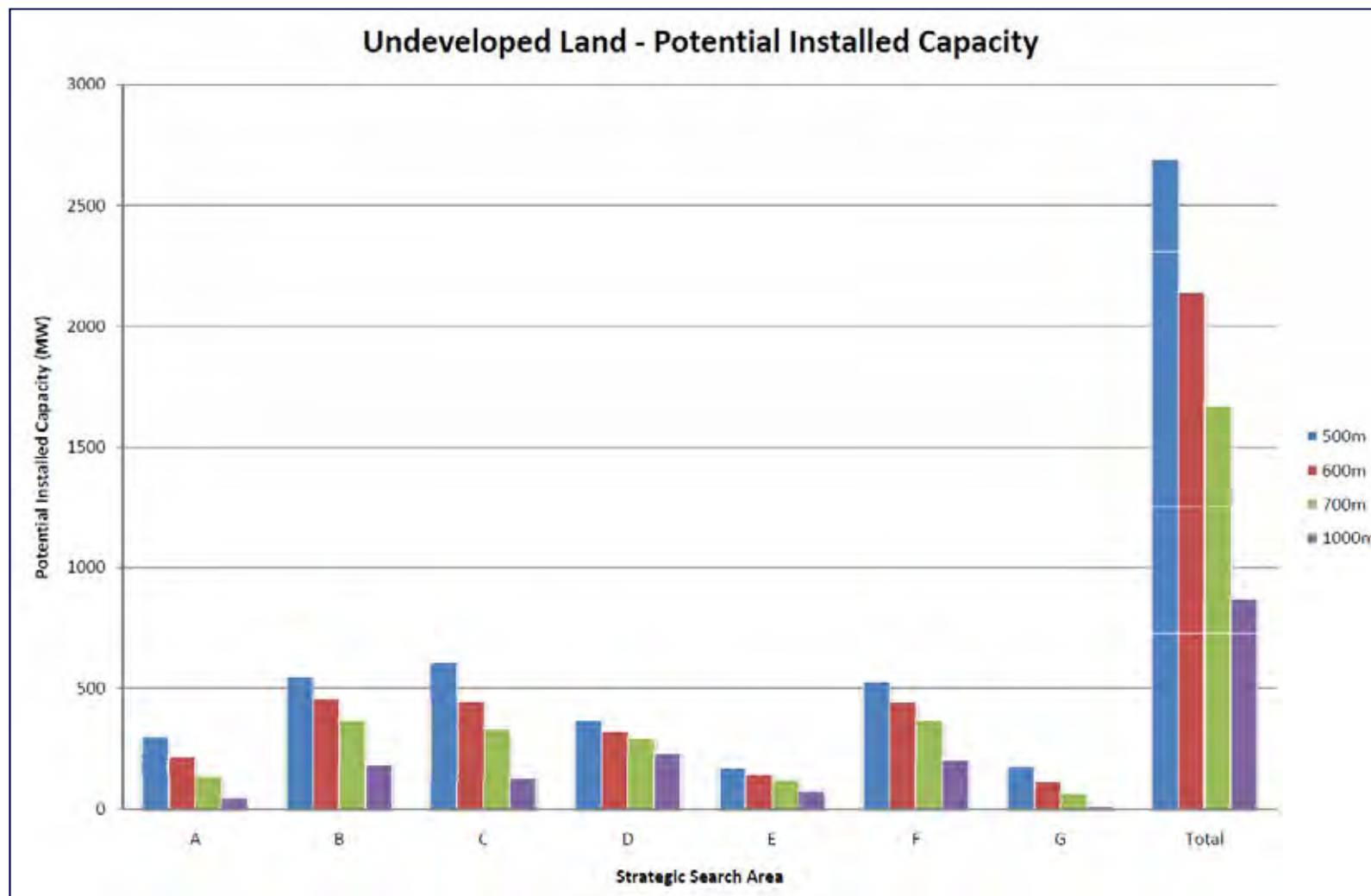
ARUP

Draft Study Results – Identifying Areas of Less Constrained Land



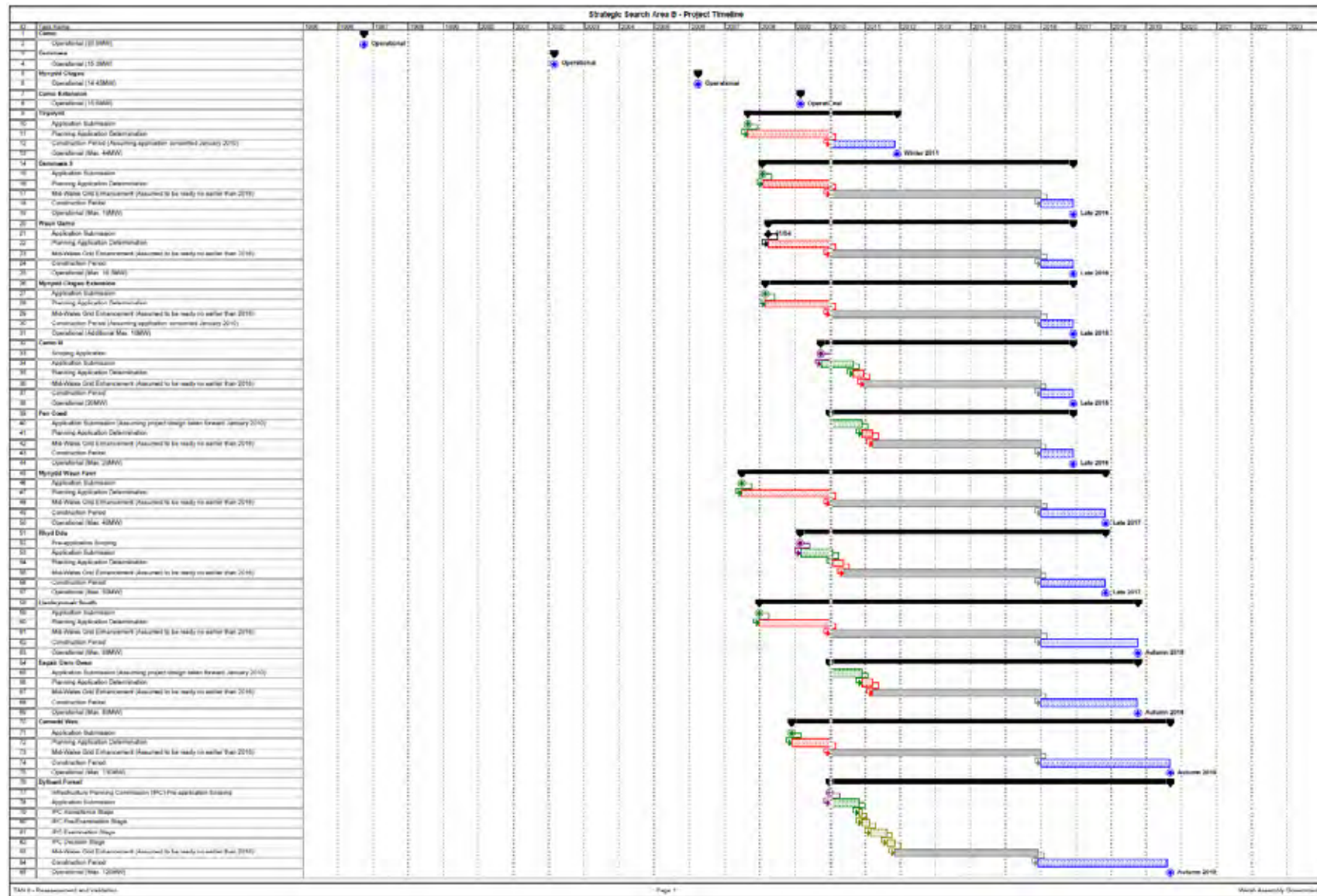
ARUP

Draft Study Results – Identifying Areas of Less Constrained Land

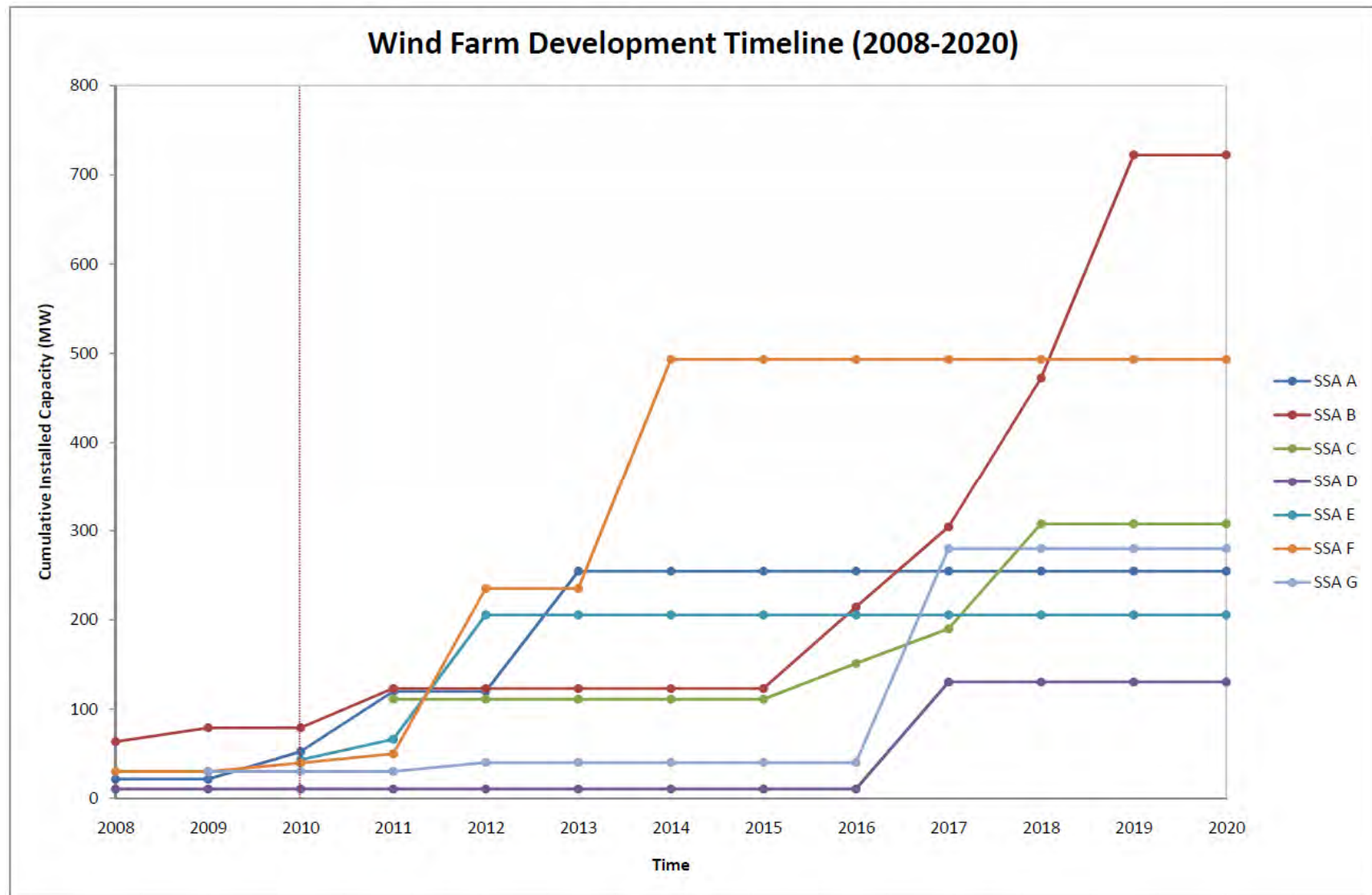


ARUP

Draft Study Results – Project Timeline



Draft Study Results – Project Timeline



Draft Conclusions

- Uncertainties identified are considerable

Current Situation

- Considerable developer interest within and around 5km of SSAs
- Significant projects within 5km of the SSAs
- Total anticipated installed capacity = Approx. 3GW
- Will the full figures be realised?

Remaining Available Resource

- Theoretical resource (with 700m residential buffer) = Approx. 1.7GW remaining
- Is all this resource really available?

Theoretical Project Timeline

- Approx. 1.2GW in operation by 2014
- Further approx. 1.1GW in operation by 2017
- When will the remaining resource be utilised?



ARUP

Questions?



ARUP