

LEGEND

Site boundary

National Park boundary

National Cycle Route 43

Proposals:

Rail

Track alignment

Platform

Buildings

Proposed Buildings

Roads and hardscape

Access road

Car park

Hardstanding / yard

Fenceline

Perimeter security fence

Double internal stock fence

Drainage

Storm ditch / swale

Proposed pond

Existing pond

Green infrastructure (new / enhanced)

Boundary tree planting

Wetland

Peatland

Broadleaf woodland

Coniferous woodland

Hedgerow

Acid grassland/lichen heath

Innoculated Heath / Acid grassland

Wet Heath

Acid grassland

Enclosed Pasture

Marshy grassland

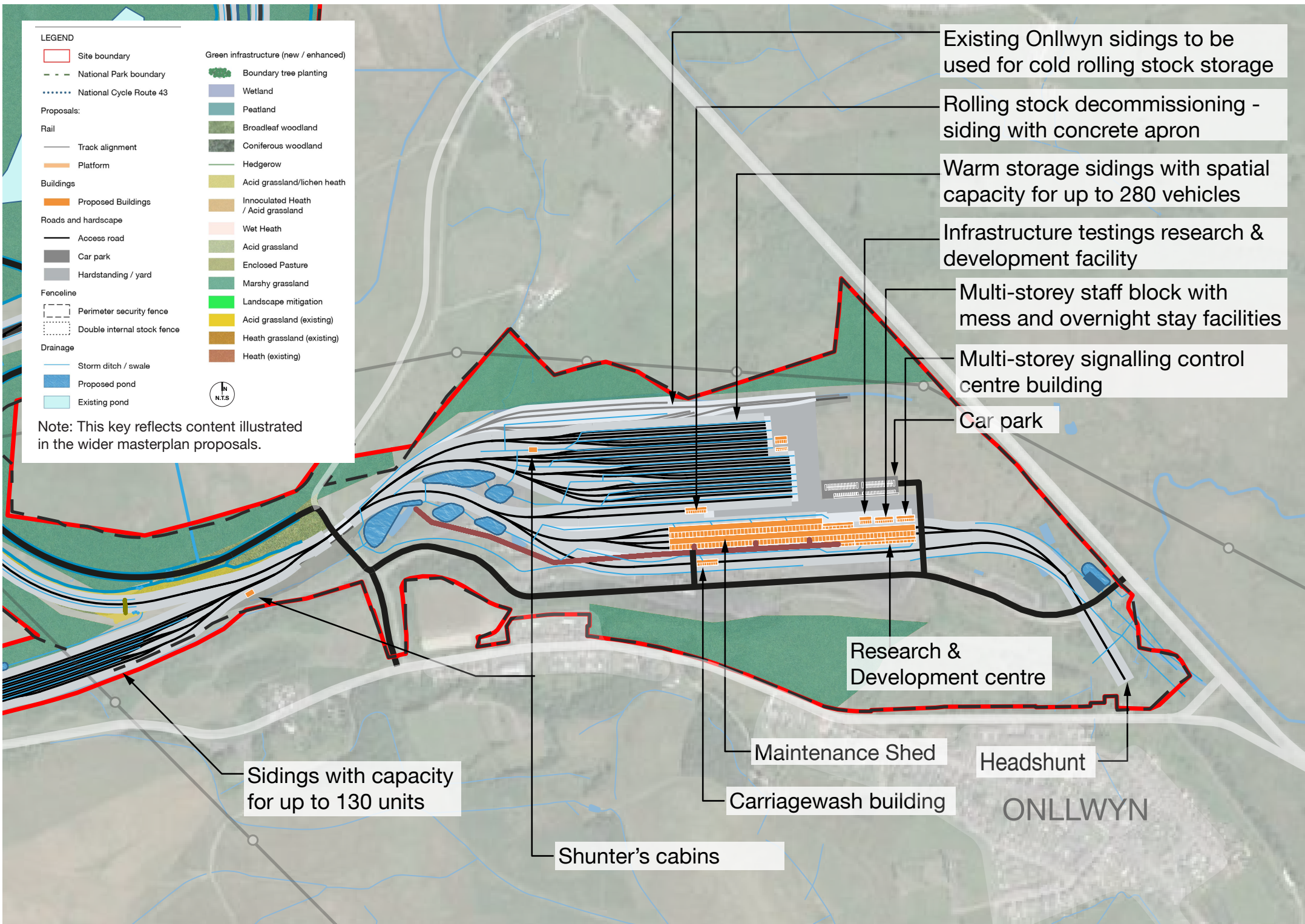
Landscape mitigation

Acid grassland (existing)

Heath grassland (existing)

Heath (existing)





LEGEND

- Site boundary
- National Park boundary
- National Cycle Route 43
- Proposals:
- Rail
 - Track alignment
 - Platform
- Buildings
 - Proposed Buildings
- Roads and hardscape
 - Access road
 - Car park
 - Hardstanding / yard
- Fenceline
 - Perimeter security fence
 - Double internal stock fence
- Drainage
 - Storm ditch / swale
 - Proposed pond
 - Existing pond

- Green infrastructure (new / enhanced)
- Boundary tree planting
 - Wetland
 - Peatland
 - Broadleaf woodland
 - Coniferous woodland
 - Hedgerow
 - Acid grassland/lichen heath
 - Innoculated Heath / Acid grassland
 - Wet Heath
 - Acid grassland
 - Enclosed Pasture
 - Marshy grassland
 - Landscape mitigation
 - Acid grassland (existing)
 - Heath grassland (existing)
 - Heath (existing)



Note: This key reflects content illustrated in the wider masterplan proposals.

Existing Onllwyn sidings to be used for cold rolling stock storage

Rolling stock decommissioning - siding with concrete apron

Warm storage sidings with spatial capacity for up to 280 vehicles

Infrastructure testings research & development facility

Multi-storey staff block with mess and overnight stay facilities

Multi-storey signalling control centre building

Car park

Research & Development centre

Maintenance Shed

Headshunt

Carriagewash building

ONLLWYN

Shunter's cabins

Sidings with capacity for up to 130 units